

Mycological Society of America

Trichothecium cinnamomeum, an Earlier Name for the Thermophilic Hyphomycete

Malbranchea sulfurea

Author(s): Lynne Sigler

Source: *Mycologia*, Vol. 79, No. 1 (Jan. - Feb., 1987), pp. 142-143

Published by: Mycological Society of America

Stable URL: <http://www.jstor.org/stable/3807754>

Accessed: 30/09/2008 15:48

Your use of the JSTOR archive indicates your acceptance of JSTOR's Terms and Conditions of Use, available at <http://www.jstor.org/page/info/about/policies/terms.jsp>. JSTOR's Terms and Conditions of Use provides, in part, that unless you have obtained prior permission, you may not download an entire issue of a journal or multiple copies of articles, and you may use content in the JSTOR archive only for your personal, non-commercial use.

Please contact the publisher regarding any further use of this work. Publisher contact information may be obtained at <http://www.jstor.org/action/showPublisher?publisherCode=mysa>.

Each copy of any part of a JSTOR transmission must contain the same copyright notice that appears on the screen or printed page of such transmission.

JSTOR is a not-for-profit organization founded in 1995 to build trusted digital archives for scholarship. We work with the scholarly community to preserve their work and the materials they rely upon, and to build a common research platform that promotes the discovery and use of these resources. For more information about JSTOR, please contact support@jstor.org.



Mycological Society of America is collaborating with JSTOR to digitize, preserve and extend access to *Mycologia*.

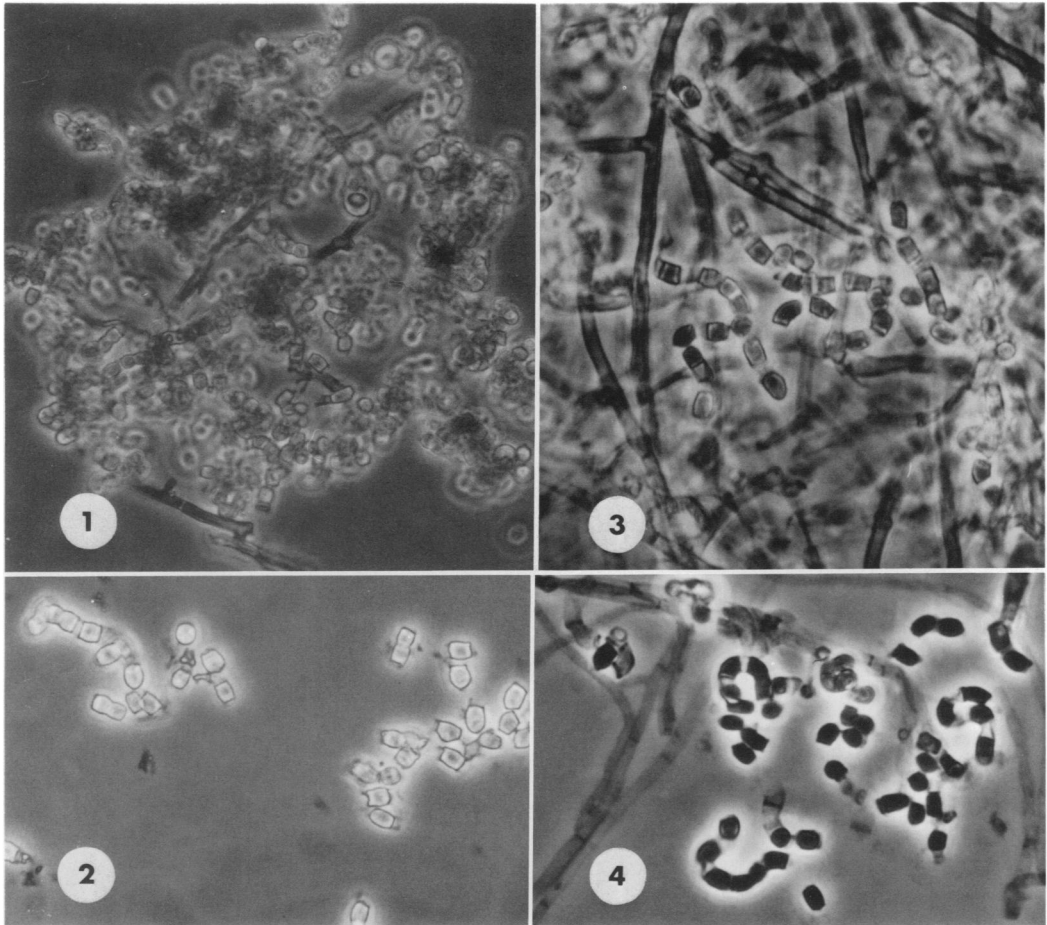
**TRICHOHECIUM CINNAMOMEUM, AN EARLIER NAME FOR THE
THERMOPHILIC HYPHOMYCETE MALBRANCHEA SULFUREA**

LYNNE SIGLER

*University of Alberta Microfungus Collection and Herbarium,
Devonian Botanic Garden, Edmonton, Alberta T6G 2H7, Canada*

Malbranchea sulfurea (Miche) Sigler & Carmichael is one of the more readily recognizable species of *Malbranchea* due to its thermophilic habit, its rapid growth in culture and its arthro-

conidia which are broader and more pigmented than most other species. The fungus is found on a variety of substrates including decomposing plant material, coal-spoil tips, soil, nesting ma-



FIGS. 1, 2. *Trichothecium cinnamomeum*, TYPE SPECIMEN. 1. Thick-walled pigmented hyphae and cylindrical alternate arthroconidia borne on curved fertile hyphae, $\times 575$. 2. Mature arthroconidia released by rhexolytic dehiscence, $\times 725$. FIGS. 3, 4. *Malbranchea sulfurea* (3-UAMH 3748; 4-UAMH 3788). 3. Thick-walled pigmented hyphae and curved fertile branches bearing cylindrical alternate arthroconidia, $\times 830$. 4. Mature arthroconidia released by rhexolytic dehiscence, $\times 780$.

terial of birds, and dung of various wild and domestic herbivores (Sigler and Carmichael, 1976).

The nomenclatural history of *M. sulfurea* was reviewed previously by Sigler and Carmichael (1976) who considered the fungus sufficiently distinct from the mesophilic *Malbranchea pulchella* Sacc. & Penzig to justify a change in status from varietal rank.

Van Oorschot and de Hoog (1984) examined the type and another collection of *Trichothecium cinnamomeum* Lib., and proposed the combination *Malbranchea cinnamomea* (Lib.) van Oorschot & de Hoog. The type specimen of *T. cinnamomeum* in Herb. BR consisted of a collection on horse dung mixed with straw; the second collection, Herb. L 922.54-67, occurred on rotten hay. Growth on these substrates was described as patches of yellow-ochre powdery growth consisting of curved, little branched fertile hyphae which divided to form alternate arthroconidia. Based on the color of the growth and the size of the arthroconidia, the species was considered to be closest to *Malbranchea aurantiaca* Sigler & Carmichael, but distinct from all other described species of *Malbranchea*.

In considering *M. cinnamomea* distinct, van Oorschot and de Hoog overlooked the nature of the substrates on which the fungus occurred. Both substrates, horse dung and rotting hay, are ones from which thermophilic fungi are frequently isolated. I have examined the type specimen of *Trichothecium cinnamomeum* and a prominent feature is the yellow-pigmented, thick-walled primary hyphae (FIG. 1). These hyphae do not divide to form arthroconidia. Arthroconidia, borne on curved or loosely coiled fertile hyphae, are closely spaced, cylindrical or slightly curved and measure $3.5-4.5 \times 3-3.5 \mu\text{m}$ (FIG. 2).

Thick-walled primary hyphae which become pigmented in age occur in *Malbranchea sulfurea* (FIG. 3), and the arthroconidia of this species are similar in shape and size, measuring $(3)3.5-7.5 \times (2)2.5-4(4.5) \mu\text{m}$, mostly $4-7 \times 3-4 \mu\text{m}$ (FIG. 4). These similarities, in addition to the occurrence of *Trichothecium cinnamomeum* on dung and straw, suggest that *T. cinnamomeum* is an earlier name for *M. sulfurea*. The proposed synonymy is then as follows:

MALBRANCHEA CINNAMOMEA (Lib.) van Oorschot & de Hoog. Mycotaxon 20: 129. 1984.

- ≡ *Trichothecium cinnamomeum* Lib. Pl. crypt. Arduenna, Coll. I, Nr. 1013 (basionym). 1830.
- ≡ *Geotrichum cinnamomeum* (Lib.) Sacc. Revue mycol. 1881: 55. 1881.
- = *Malbranchea sulfurea* (Miehe) Sigler & Carmichael. Mycotaxon 4: 441. 1976.
- ≡ *Thermoideum sulfureum* Miehe. Deutsche Bot. Gesell. 25: 515. 1907.
- ≡ *Malbranchea pulchella* var. *sulfurea* (Miehe) Cooney & Emerson. Thermophilic Fungi, p. 102. 1964.

Appreciation is expressed to Dr. A. Bienfait of the Jardin Botanique National de Belgique for the loan of the type of *T. cinnamomeum*, and to Mrs. A. Flis for preparing the photographs.

Key Words: *Trichothecium cinnamomeum*, *Malbranchea sulfurea*, *Malbranchea cinnamomea*, thermophile

LITERATURE CITED

- Oorschot, C. A. N. van, and G. S. de Hoog. 1984. Some hyphomycetes with thallic conidia. *Mycotaxon* 20: 129-132.
- Sigler, L., and J. W. Carmichael. 1976. Taxonomy of *Malbranchea* and some other hyphomycetes with arthroconidia. *Mycotaxon* 4: 349-488.